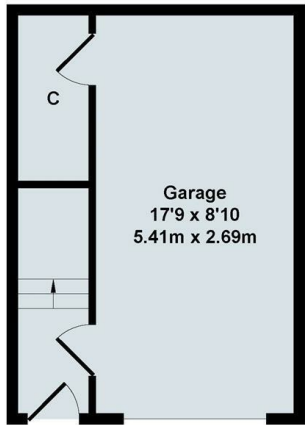




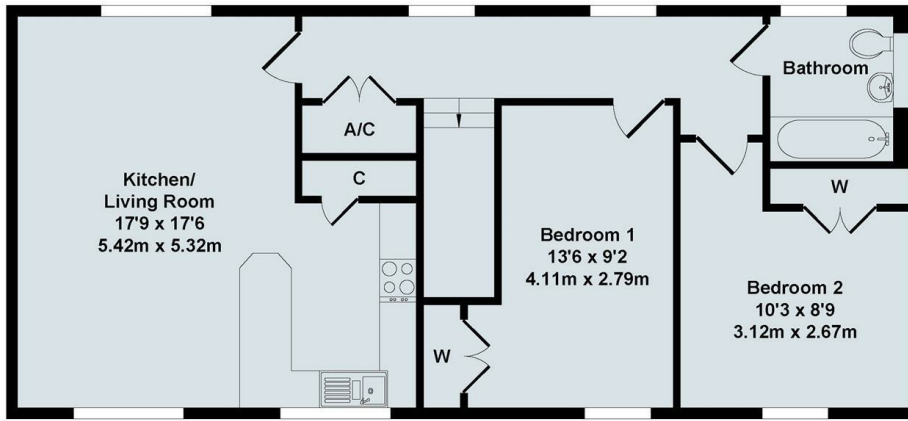
## 3 Stenter Mews, Witney, OX28 6FJ

£1,450 PCM - 30th May 2026.

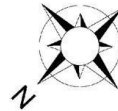
- Two double bedrooms
- Gas CH
- Council Tax C
- Unfurnished
- Bathroom with shower over
- Mains gas electricity and water
- White goods
- EPC rating C



Ground Floor



First Floor

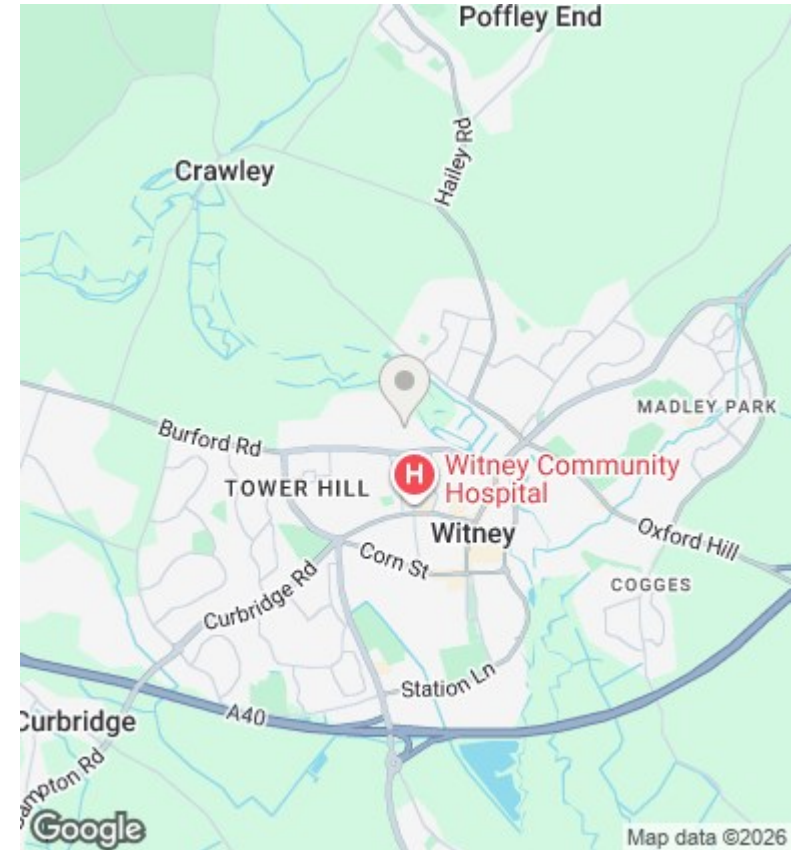


### 3 Stenter Mews, Witney

Total Approx. Floor Area 913 Sq.Ft. (84.80 Sq.M.)

All items illustrated on this plan are included in the "Total Approx Floor Area"

Whilst every attempt has been made to ensure the accuracy of the floor plan contained here, measurements of doors, windows, rooms and any other items are approximate and no responsibility is taken for any error, omission, or mis-statement. This plan is for illustrative purposes only and should be used as such by any prospective purchaser. The services systems and appliance shown have not been tested and no guarantee as to their operability or efficiency can be given



### Directions

### Viewings

Viewings by arrangement only. Call 01993 463177 to make an appointment.

### Council Tax Band

C

### EPC Rating:

C

Energy Efficiency Rating		
	Current	Potential
Very energy efficient - lower running costs		
(92 plus) <b>A</b>		
(81-91) <b>B</b>		
(69-80) <b>C</b>	76	76
(55-68) <b>D</b>		
(39-54) <b>E</b>		
(21-38) <b>F</b>		
(1-20) <b>G</b>		
Not energy efficient - higher running costs		
<b>England &amp; Wales</b>	EU Directive 2002/91/EC	